

STANDARD-DUTY WRECKERS MPL™ WRECKER



RUTHLESS WORKAHOLIC

MPL™ WRECKER

The more work the better for Jerr-Dan's MPL self-loader. This wrecker is perfect for repossession work. It offers various best-in-class features: outstanding visibility, longest underlift, patented over-center LOCKLINK mechanism and a modular aluminum body. The standard Adjustable Underlift Level Stop Assist System gets you set up and in position quicker. It provides an interrupt to the remote control signal to stop the underlift travel at a desired loading position. Negative tilt, for those vehicles in ditches or on steep inclines, is also still possible with system override. Go ahead, make it work even harder.

Specifications:

Underlift	
Self-Loading Wheel Grids	4,000 lb capacity
Power Tilt & Fold - Positive / Negative	20° / 20°
Reach with L-Arms, retracted (rear of tailboard to centerline of L-Arms)	49"
Reach with L-Arms, extended (rear of tailboard to centerline of L-Arms)	78"
Centerline of Rear Axle to Rear of Tailboard	36"
Maximum Horizontal Towing Height with L-Arms	31"

Recommended Chassis Requirements

Minimum GVWR	11,000 lbs
Minimum Cab to Axle (clear)	60"
Minimum Frame RBM (each rail)	230,000 in-lbs
Maximum Unloaded Frame Height	36"
Minimum Frame Length Behind Center of Rear Axle	36"

Top Five Reasons To Make This Wrecker Yours

1. The MPL wrecker offers best-in-class visibility. You have a tremendous view of the underlift and crossbar as well as a low profile, tapered rear deck winch mounted below the rear window.
2. The clear deck top offers more space for storage – the most usable flat storage in the industry.
3. The longest underlift reach in its class means it's easier than ever to get long overhang vehicles. And, the negative-tilt feature lets you tow vehicles from ditches or downhill.
4. The patented LOCKLINK over-center L-Arm locking device keeps the arm behind the tire.
5. The standard Adjustable Underlift Level Stop Assist System gets you set up quickly by providing an interrupt to the remote control signal to stop the underlift travel at a desired loading position.

FEATURES



1. Body/Rails/Fender Flares

New modular aluminum body design and rubrails make this unit stylish and allows for easy maintenance. Integrated fender liners and flares are durable and will not rust.



2. High Speed Worm Gear Winch

Durable. Fast. Reliable. Hoses and valves are located for easier servicing.



3. Deck Top

Deck top is clear, offering more space for storage.



4. Tow Sling*

Modular, stowable design for additional towing versatility.



5. Storage

Driver and passenger side tool boxes offer adjustable shelf, durable latches, auto on/off lighting and more space.



6. Adjustable Underlift Level Stop Assist System

This standard feature provides an interrupt to the remote control signal to stop the underlift travel at a desired loading position.



7. Headboard

Stylish new headboard provides greater visibility.



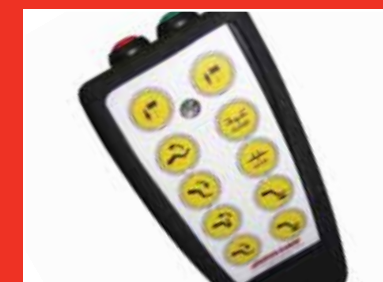
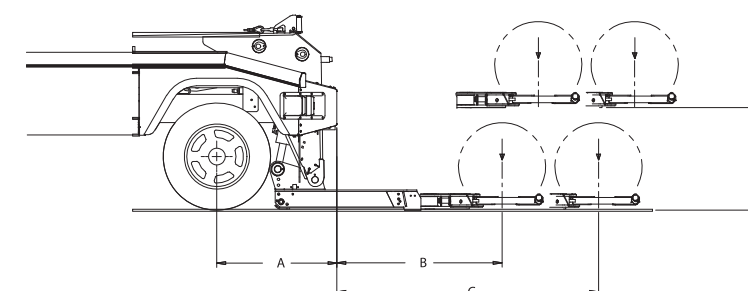
8. Grid Mounted Recovery Sheave*

Sheave comes standard with tow sling option, and is an available option for aid in difficult recoveries.

SPECIFICATIONS

	Distance	Rating
A. Centerline of Rear Axle to Rear of Tailboard	36"	
B. Reach with L-Arms, retracted (rear of tailboard to centerline of L-Arms)	49"	4,000 lbs
C. Reach with L-Arms, extended (rear of tailboard to centerline of L-Arms)	78"	4,000 lbs
D. Maximum Horizontal Towing Height with L-Arms	31"	

Note: All dimensions are based on a 34.50" truck frame height and rounded to the nearest inch. Dimensions are subject to change without notice.



9. Wireless Remote Control (10 Function)*

Convenient operation of all valve functions, in cab or out.

* Optional Equipment Shown

